

# The chemical composition of Amazonas plants<sup>(\*)</sup>

A Catalogue, edited by Setor de Fitoquímica, INPA, Manaus, Amazonas

FAMILY :

Guttiferae

OCURRENCE : Manaus, Amazonas

TRUNK WOOD :

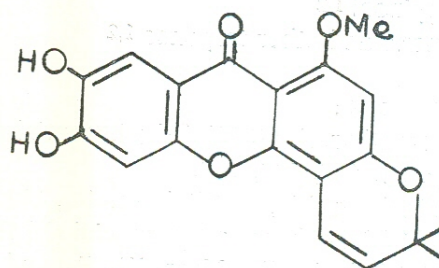
Lorostemin (I)

REFERENCE :

Braz Filho, R., Coutinho Lemos, M. de J. and  
Gottlieb, O. R. (1973) *Phytochemistry* 12, 947.

SPECIES :

*Lorostemon coelhoi* Paula  
*L. negrensis* Froes



(I)

FAMILY :

Lauraceae

OCURRENCE : Manaus, Amazonas.

TRUNK WOOD :

O-Methyleugenol 1

Eugenol 1

1-Nitro-2-phenylethane 1

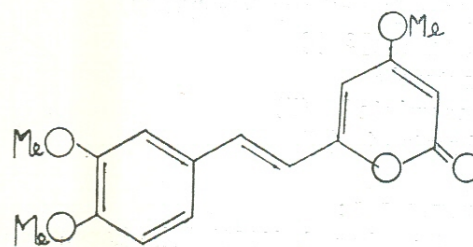
6-(3', 4'-Dimethoxy-*trans*-styryl)-4-methoxy-2-pyrone 2 (I)

REFERENCES :

1. Gottlieb, O. R. and Taveira Magalhães, M. (1959) *J. Org. Chem.* 24, 2070.
2. Andrade da Mata Rezende, C. M., von Bülow, M. V., Gottlieb, O. R., Lamêgo Vieira Pinho, S. and da Rocha, A. I. (1971) *Phytochemistry*, 10, 3167.

SPECIE :

*Aniba canelilla* (H.B.K.) Mez  
"Casca Preciosa"



(I)

(\*) — Contributions to this catalogue, which will be continued in subsequent issues of this Journal, are invited, and should be submitted to address given above.

FAMILY :  
Lauraceae

SPECIES :  
*Aniba duckei* Kost.  
"pau rosa"

OCURRENCE : Amazônia

TRUNK WOOD :

4-Methoxyphenylcoumalin (4-methoxy-6-phenyl-2-pyrone) <sup>4</sup>

4-Metroxyparacotoin (4-methoxy-6-piperonyl-2-pyrone) <sup>3</sup>

Anibine [4-methoxy-6-(3-pyridyl)-2-pyrone] <sup>3</sup>

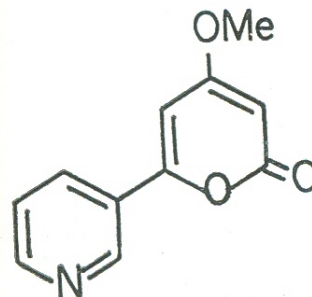
Cotoin (2,6-dihydroxy-4-methoxy-benzophenone)

Linalool <sup>1,2</sup>

1,8-Cineol <sup>1,2</sup>

∞ -Terpineol <sup>1,2</sup>

∞ -Pinene and other terpenes <sup>1,2</sup>



(I)

REFERENCES :

1. Guenther, E. (1963) "The Essential Oils" V. II, p. 54, 167, 188, 708.
2. Fineberg, M., Gottlieb, O. R., Lima Guimarães, M., Maravalhas, N. and Taveira Magalhães, M. (1964) *Perfumery & Essencial Oil Record* 55, 253.
3. Gottlieb, O. R., Mors, W. B. and Djerassi, C. (1957) *J. Am. Chem. Soc.* 79, 4507.
4. Gottlieb, O. R., Taveira Magalhães, M. and Mors, W. B. (1960) *Anais Assoc. brasil, Quim.* 19, 193.
5. Gottlieb, O. R. and Mors, W. B. (1958) *J. Am. Chem. Soc.* 80, 2263.

FAMILY :  
Lauraceae

SPECIES :  
*Aniba rosaedora* Ducke  
"pau rosa"

OCURRENCE : Amazônia

TRUNK WOOD :

4-Methoxyparacotoin (4-methoxy-6-piperonyl-2-pyrone) <sup>3</sup>

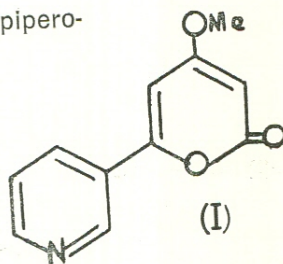
Linalool and terpenes <sup>1</sup>

Anibine [4-methoxy-6-(3-pyridyl)-2-pyrone] <sup>3</sup> (I)

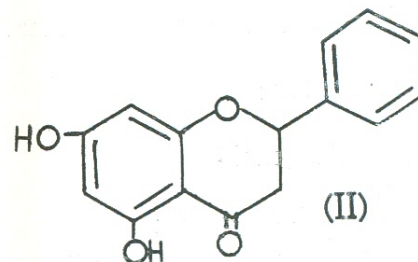
Sitosterol <sup>3</sup>

Pinocembrin <sup>2</sup> (II)

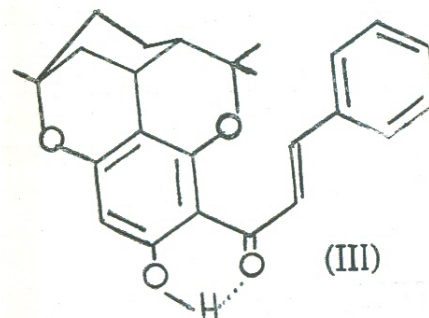
Rubranine <sup>4</sup> (III)



(I)



(II)



(III)

REFERENCES :

1. Guenther, E. (1963) "The Essential Oils" V. II, 167.
2. Gottlieb, O. R. and Mors, W. B. (1958) *J. Am. Chem. Soc.* 80, 2263.
3. Gottlieb, O. R., Taveira Magalhães, M. and Mors, W. B. (1960) *Anais Assoc. brasil. Quim.* 19, 193.
4. Combes, G., Vassort, P. L. and Winternitz, F. (1970) *Tetrahedron* 26, 5981.